

Trilennium® 3020 Multi-Point Locking System

Replacement Instructions

TOOLS REQUIRED:

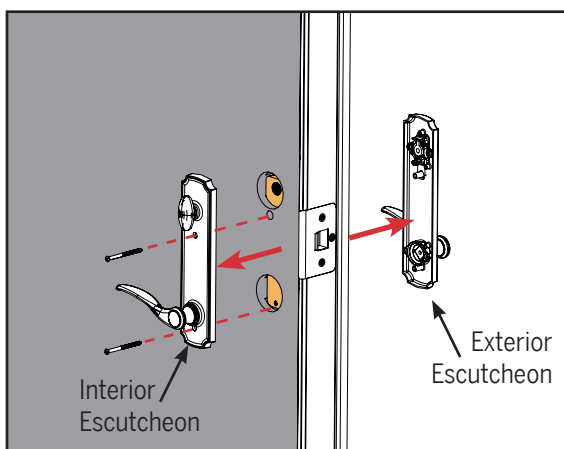
- Screwdriver or Drill

KIT INCLUDES:

- Trilennium® 3020 Multi-Point Lock
- Mounting Screws

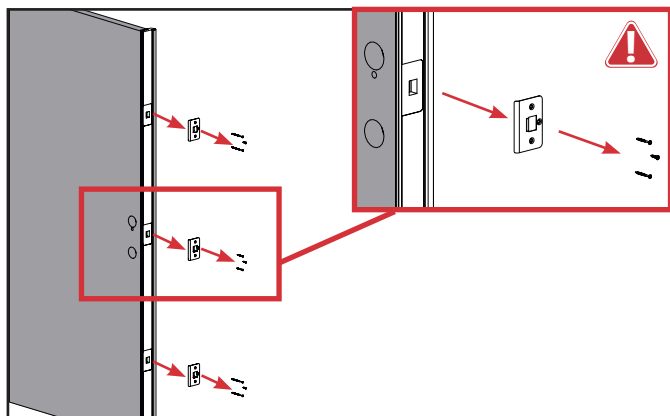


STEP 1: REMOVE THE HANDSET FROM THE INACTIVE DOOR PANEL




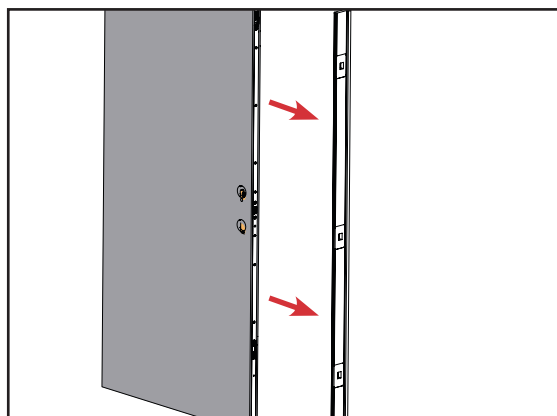
Remove the screws securing the handset from the interior escutcheon. Make sure to hold the exterior escutcheon as the screws are being removed to prevent damage. Set aside the handset along with all of the internal components.

STEP 2: REMOVE THE DUMMY ASTRAGAL FROM THE INACTIVE DOOR PANEL



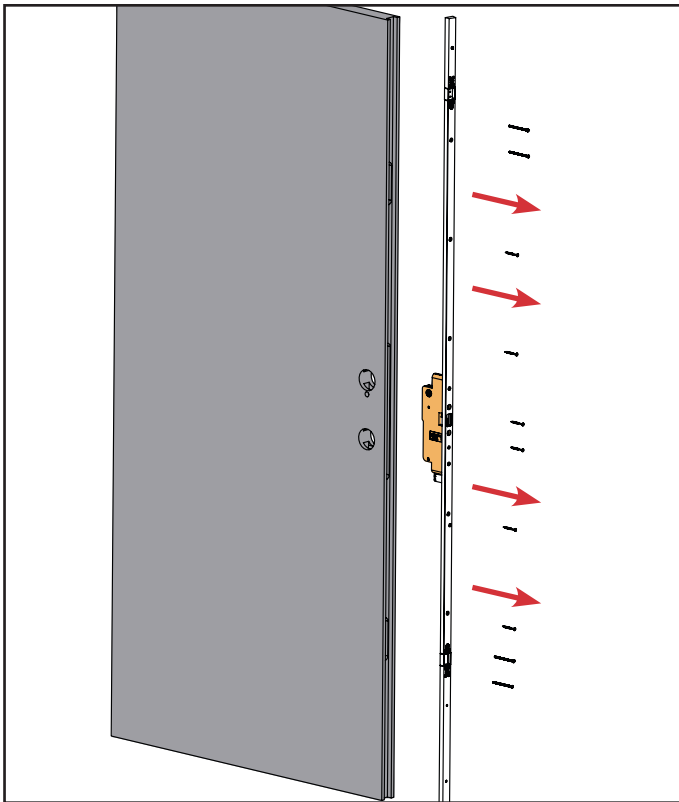
a. Remove the strike plate assemblies and set aside for reinstallation later.

 Note carefully where each screw goes, particularly the two machine screws holding the center strikes. They will be **shorter** than the rest.

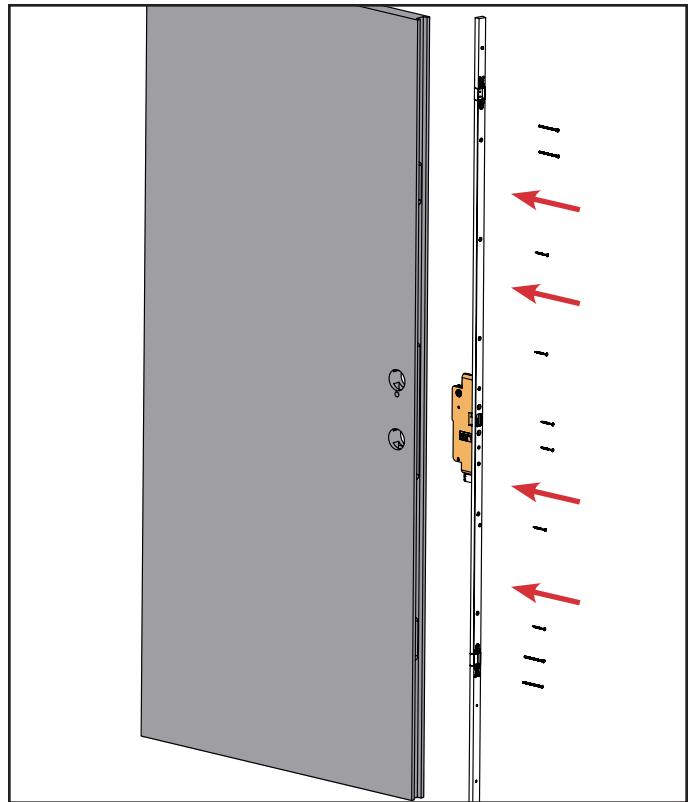


b. Remove the dummy astragal from the door panel and set it aside for reinstallation later.

STEP 3: REPLACE THE OLD LOCK WITH THE NEW LOCK

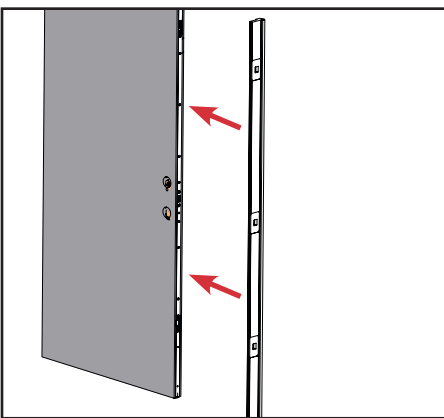


a. Remove the screws securing the lock to the door panel. Remove the lock from the door panel and discard.

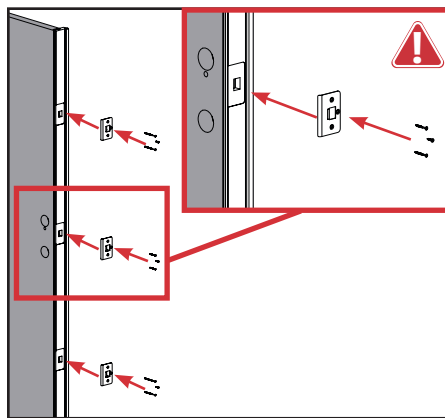


b. Insert the new 3020 lock into the pocket in the door from which the old lock was removed. Secure the lock in place with the screws provided.


STEP 4: REINSTALL THE DUMMY ASTRAGAL AND HANDSET

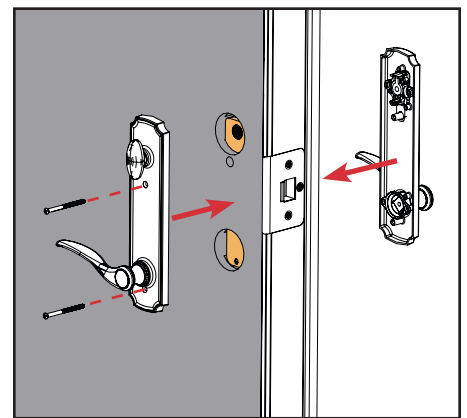


a. Align the dummy astragal over the lock and reinstall.



b. Reinstall the strike plate assemblies into the routed pockets on the astragal.

 Ensure the machine screws removed from the strike plates are returned to the original location.



c. Reinstall the handset onto the inactive door panel ensuring all internal components are in place.