

Endura Ultimate Trilennium® Compatible Astragal Shoot Bolt

Replacement Instructions

Tools Required:



Phillips
Screwdriver

Camera may be helpful for proper
installation

Recommended Parts for Lower Flush Bolts:

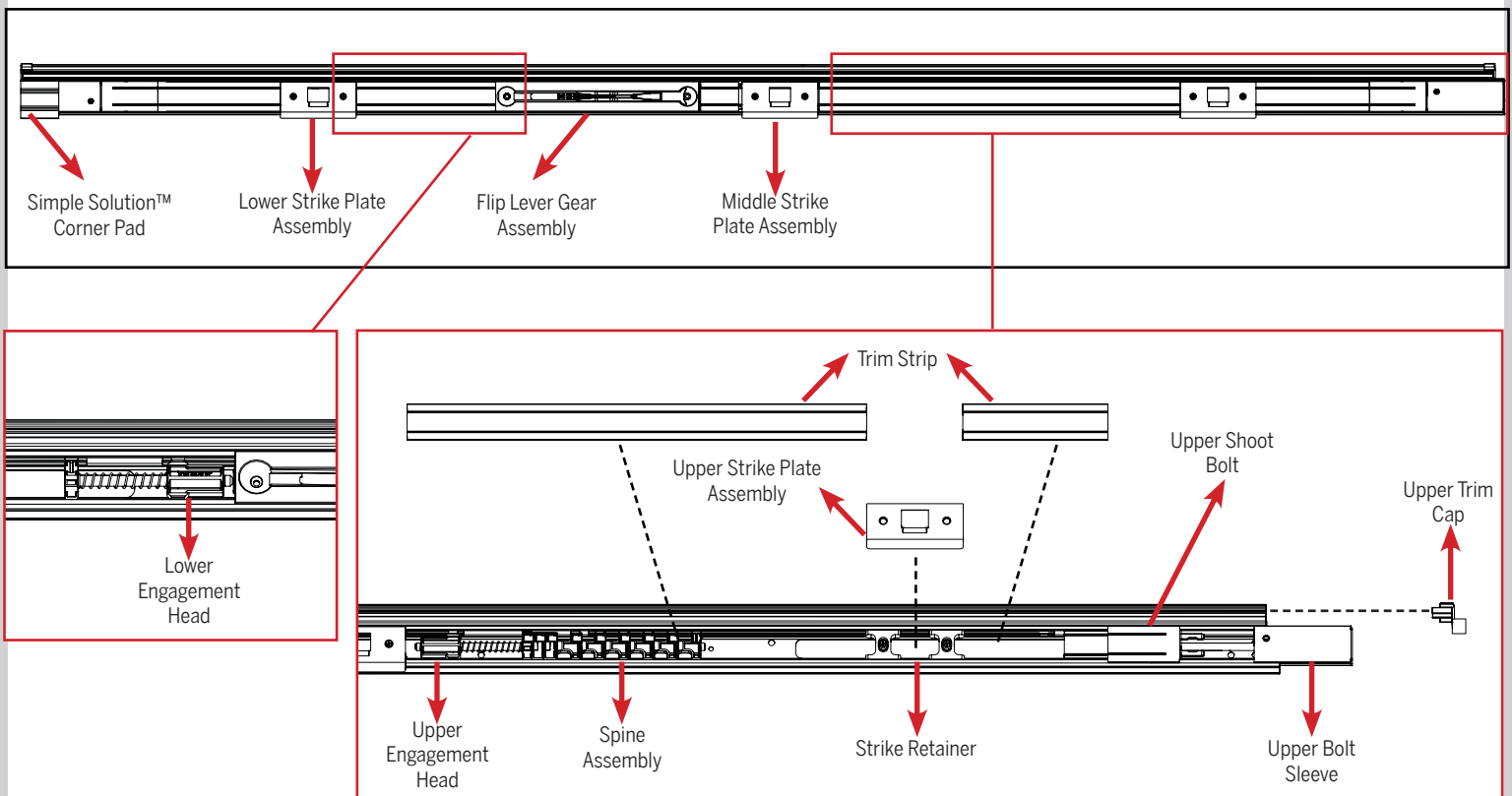


Endura Simple Solution™
Corner Pad



Product Reference Guide:

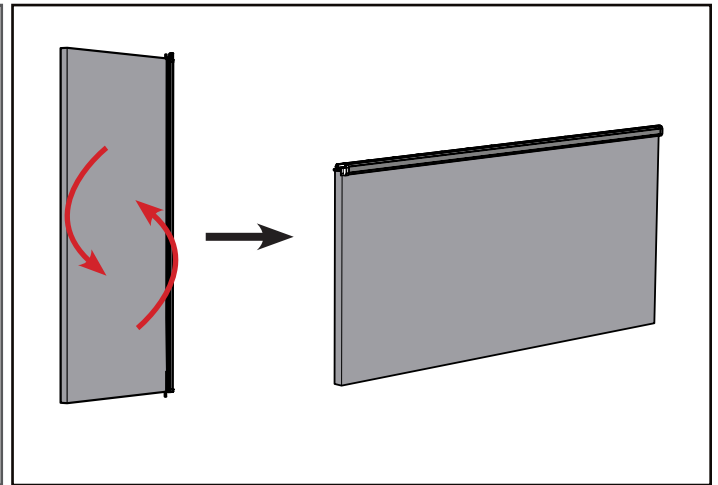
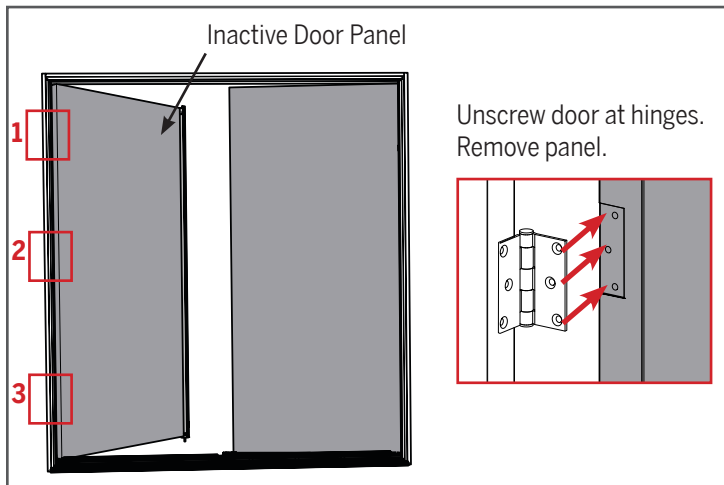
Ultimate Trilennium® Compatible Astragal Anatomy



8817 West Market Street, Colfax, NC 27235
800.334.2006 Fax: 336.668.4478
www.enduraproducts.com

SKU: BD-INST-ETCA-BOLT
Revised: 02.07.2017

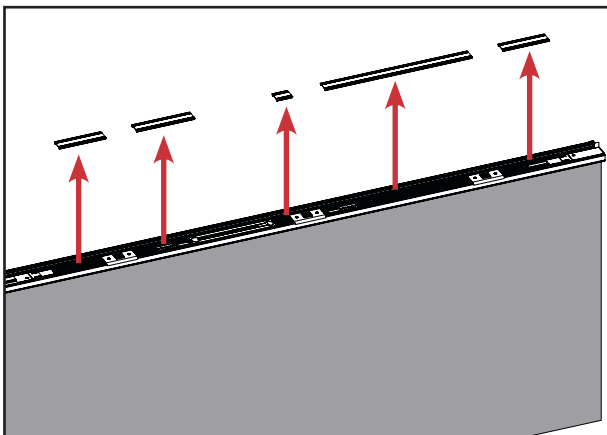
STEP 1: REMOVE DOOR PANEL FROM JAMB



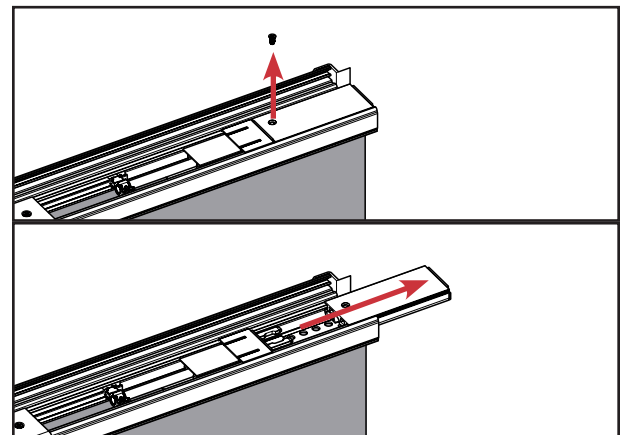
a. Remove the inactive door panel by unscrewing the door from the hinges.

b. Place the door panel horizontally against a strong support to access the astragal.

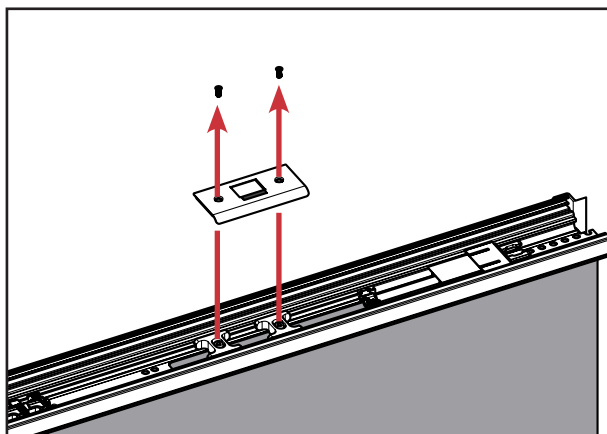
STEP 2: REMOVE COMPONENTS FROM ASTRAGAL



a. Remove the trim strip along the entire astragal body. Note where the 5 pieces of the strip belong, as you will have to return them to the exact position.



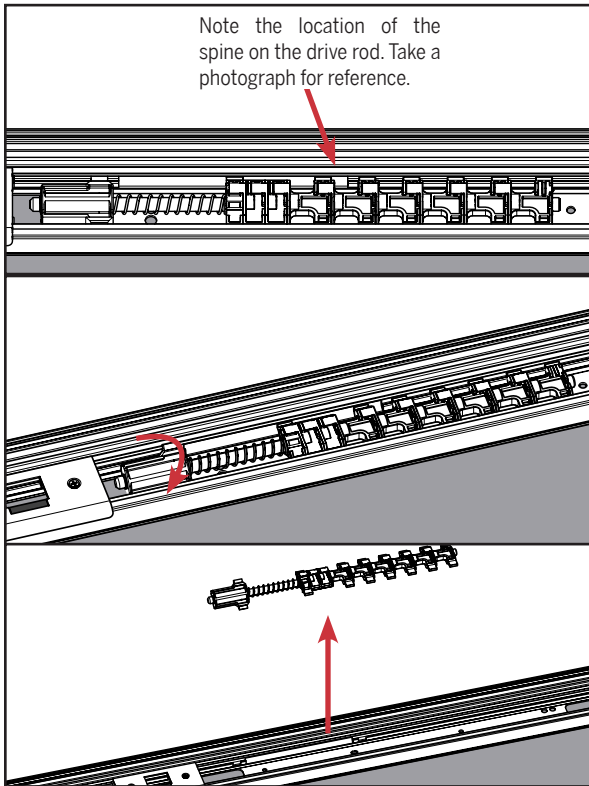
b. Unscrew and remove the bolt sleeves off the bolt(s) you are replacing.



c. Unscrew the strike plate near the bolt being replaced and remove.

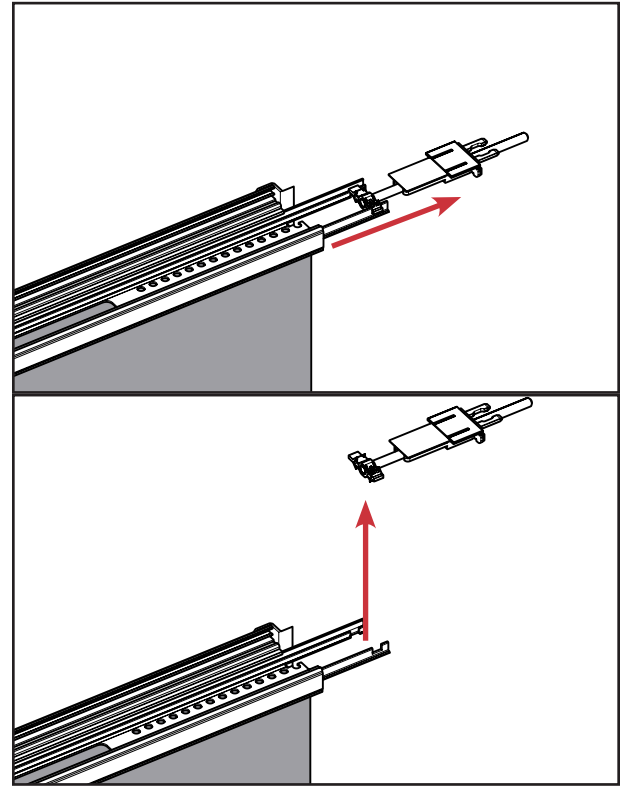
STEP 3: REMOVE THE SHOOT BOLT

IF REPLACING UPPER SHOOT BOLT:

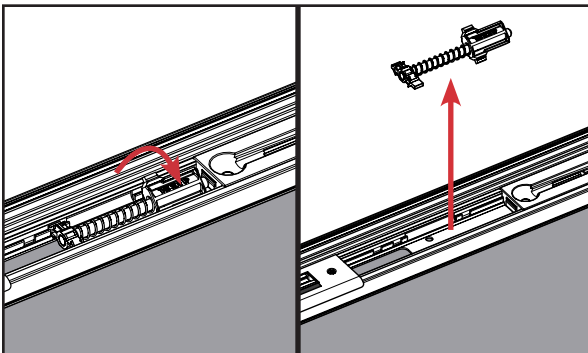


a. Rotate the upper engagement head and spine assembly out of the drive rods in the astragal. Remove the assembly from the astragal body.

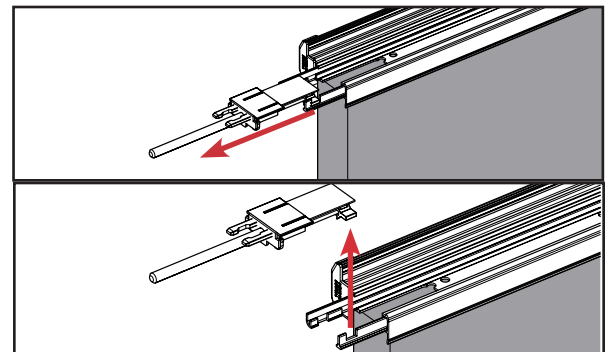
******Note the exact location and orientation of the spine assembly and the engagement head in order to reinstall correctly. We suggest taking a photograph for reference.



IF REPLACING LOWER SHOOT BOLT:

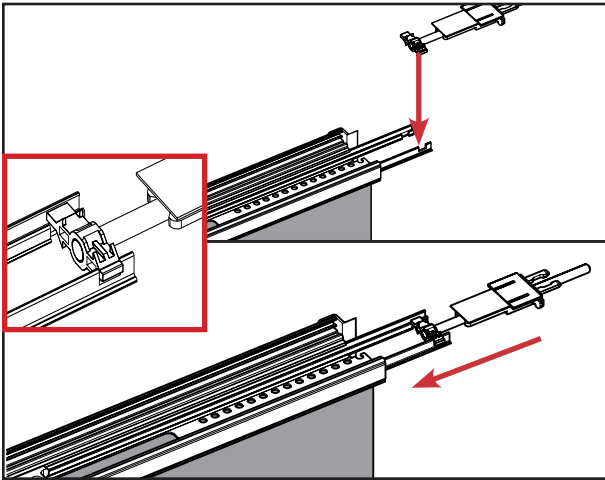


******Note the exact location and orientation of the assembly in order to reinstall correctly. We suggest taking a photograph for reference.

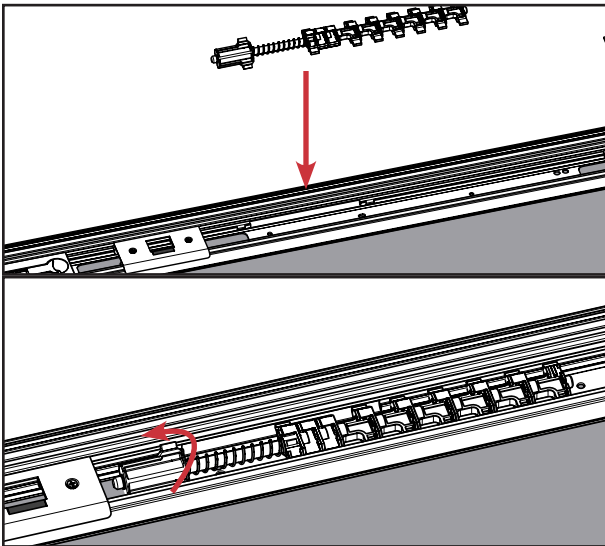


STEP 4: RETURN COMPONENTS INTO ASTRAGAL

UPPER SHOOT BOLT:

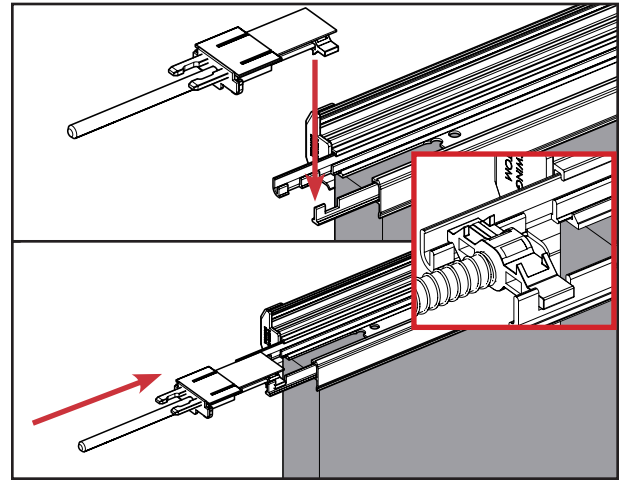


a. Return the shoot bolt so its engagement head notches securely in to the grooves on the metal driver rods. Slide the rods back in place.

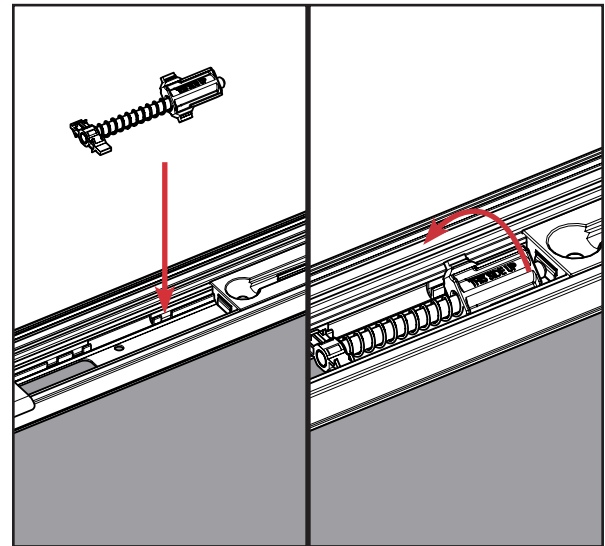


b. Replace the spine assembly in the exact location from which it was removed.

LOWER SHOOT BOLT:

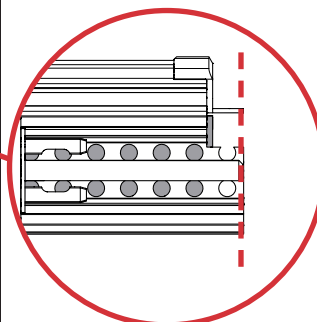
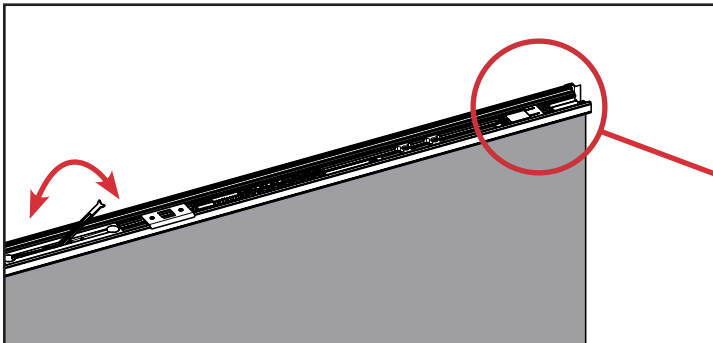


a. Return the shoot bolt so its engagement head notches securely in to the grooves on the metal driver rods. Slide the rods back in place.



b. Replace the spine assembly in the exact location from which it was removed.

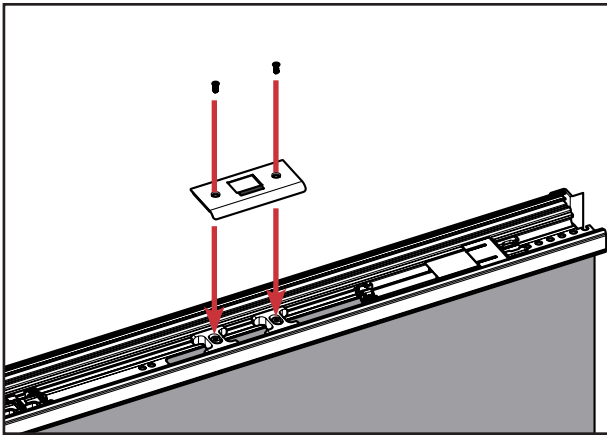
STEP 5: CONFIRM BOLT OPERATION



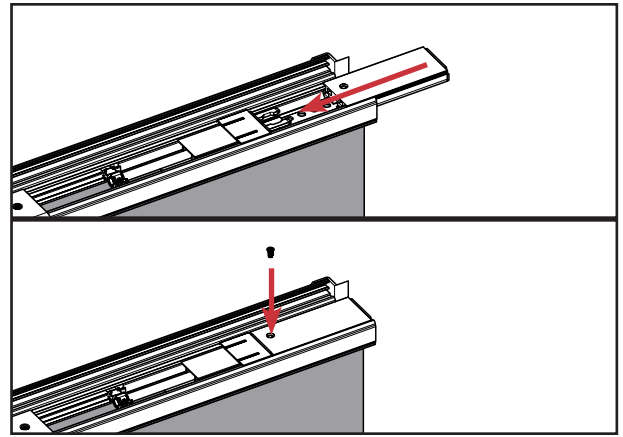
When the flip lever is in the unlocked position, the end of the bolt should be either flush with the end of the astragal body or slightly inset.

Operate the flip lever to ensure the bolt is actively engaged and that both bolts move when the flip lever moves. Leave the astragal in an unlocked position to reinstall the remaining components.

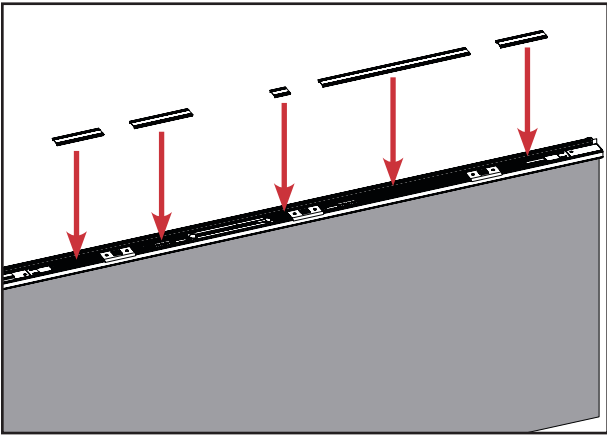
STEP 6: REINSTALL REMAINING COMPONENTS



a. Reinstall any strike plate assemblies that had been removed. Do not fully tighten.

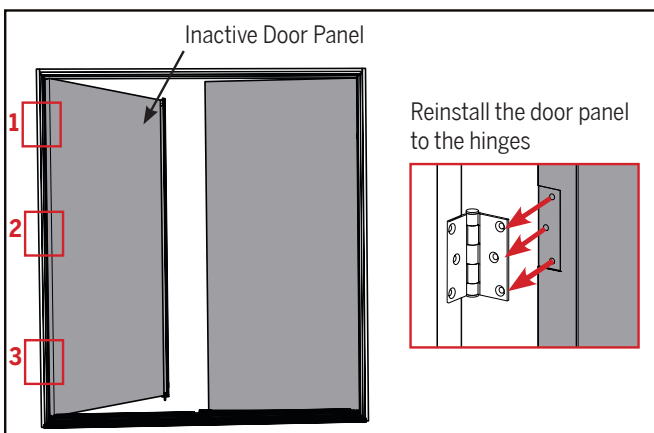


b. Reinstall the bolt sleeves previously removed. When unlocked, the end of the bolt sleeve should be flush against the end of the astragal body.

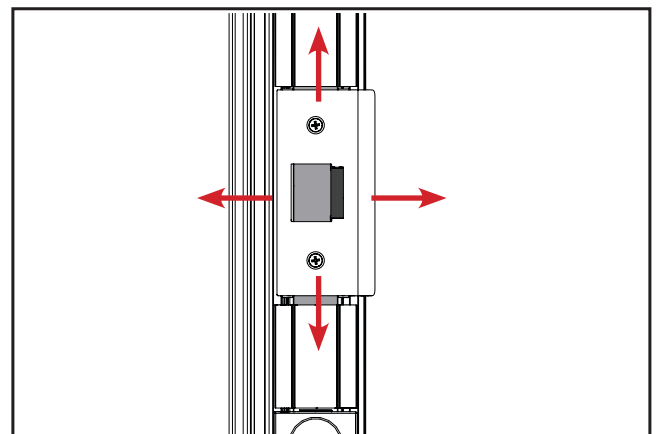


c. Reinstall the trip strip in the same locations from which it was previously removed. This will help guide the strike retainers. Once installed, tighten the strike plate assemblies into the retainers.

STEP 7: REINSTALL DOOR PANEL ON JAMB



a. Reinstall the inactive door panel by screwing the door panel back to the hinges.



b. Adjust the location of the plates if necessary by loosening the screws and sliding the plate horizontally.