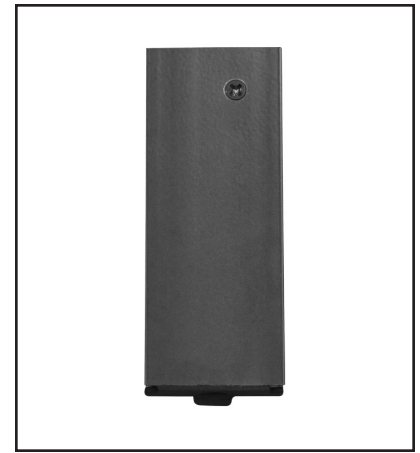


Endura Astragal Bolt Sleeve

Replacement Instructions



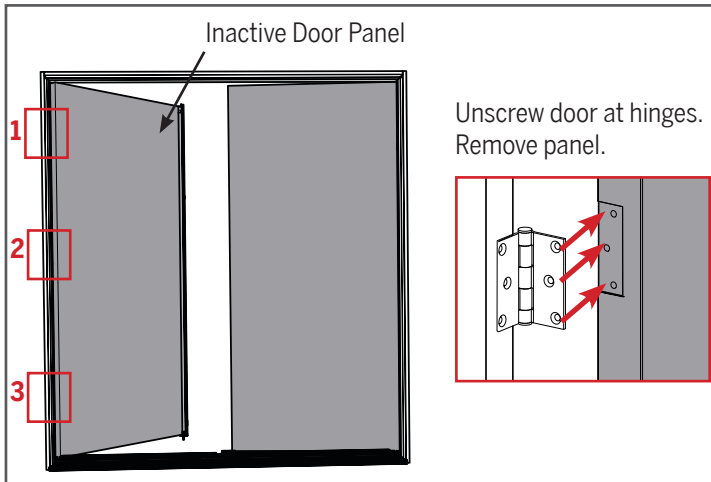
Tools Required:



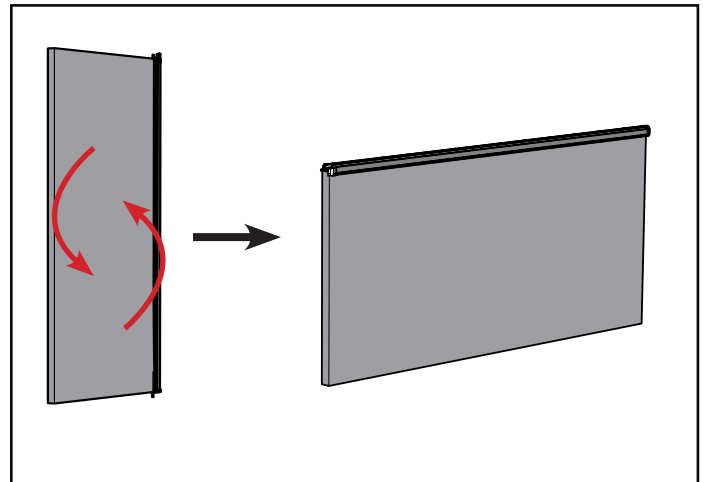
Phillips
Screwdriver

NOTE: The Astragal Bolt Sleeve is for use with the Endura Ultimate Flip Lever Astragal, Endura Multi-Point Astragal and Endura Ultimate Trilennium® Compatible Astragal.

STEP 1: REMOVE DOOR PANEL FROM JAMB

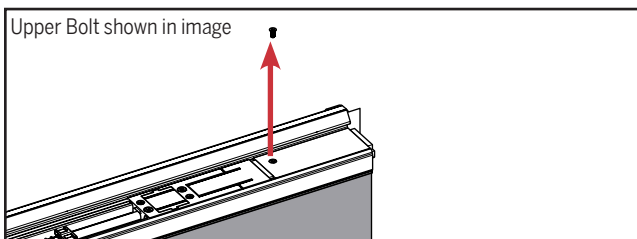


a. Remove the inactive door panel by unscrewing the door from the hinges.

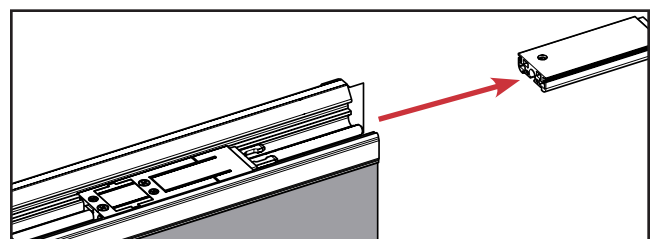


b. Place the door panel horizontally against a strong support to access the astragal.

STEP 2: REMOVE EXISTING BOLT SLEEVE, IF PRESENT

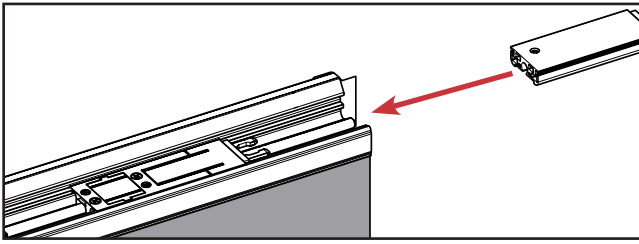


a. Remove the screw securing the existing bolt sleeve.

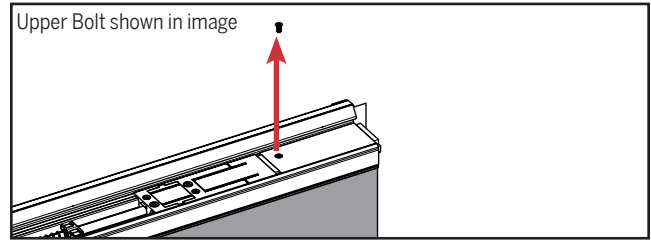


b. Slide the bolt sleeve out of the astragal body.


STEP 3: INSTALL NEW BOLT SLEEVE



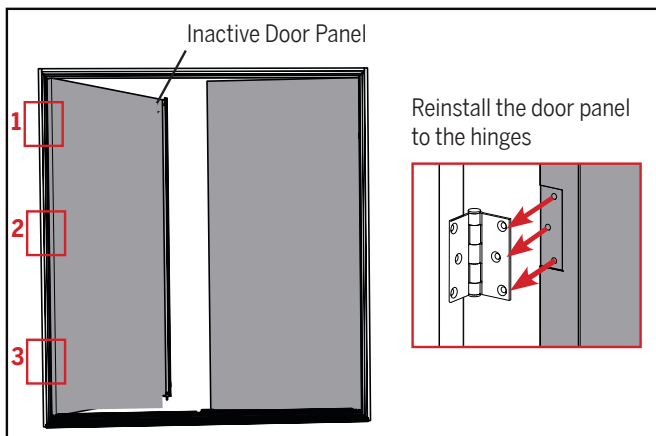
a. Slide the bolt sleeve onto the shoot bolt in the astragal body.



b. Secure the bolt sleeve by installing the screw.

 **IMPORTANT: Overtightening of screws may cause improper operation**

STEP 4: REINSTALL DOOR PANEL ON JAMB



a. Reinstall the inactive door panel by screwing the door panel back to the hinges.